
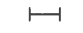





See Detail "A"

FM 1774 TO REMAIN OPEN DURING CLOSURE OF FM 1488 @ UPRR

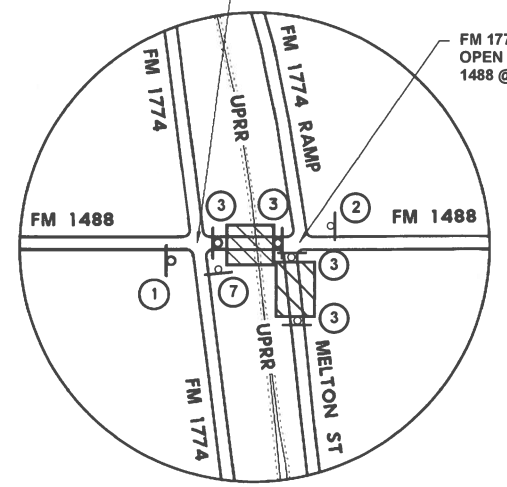
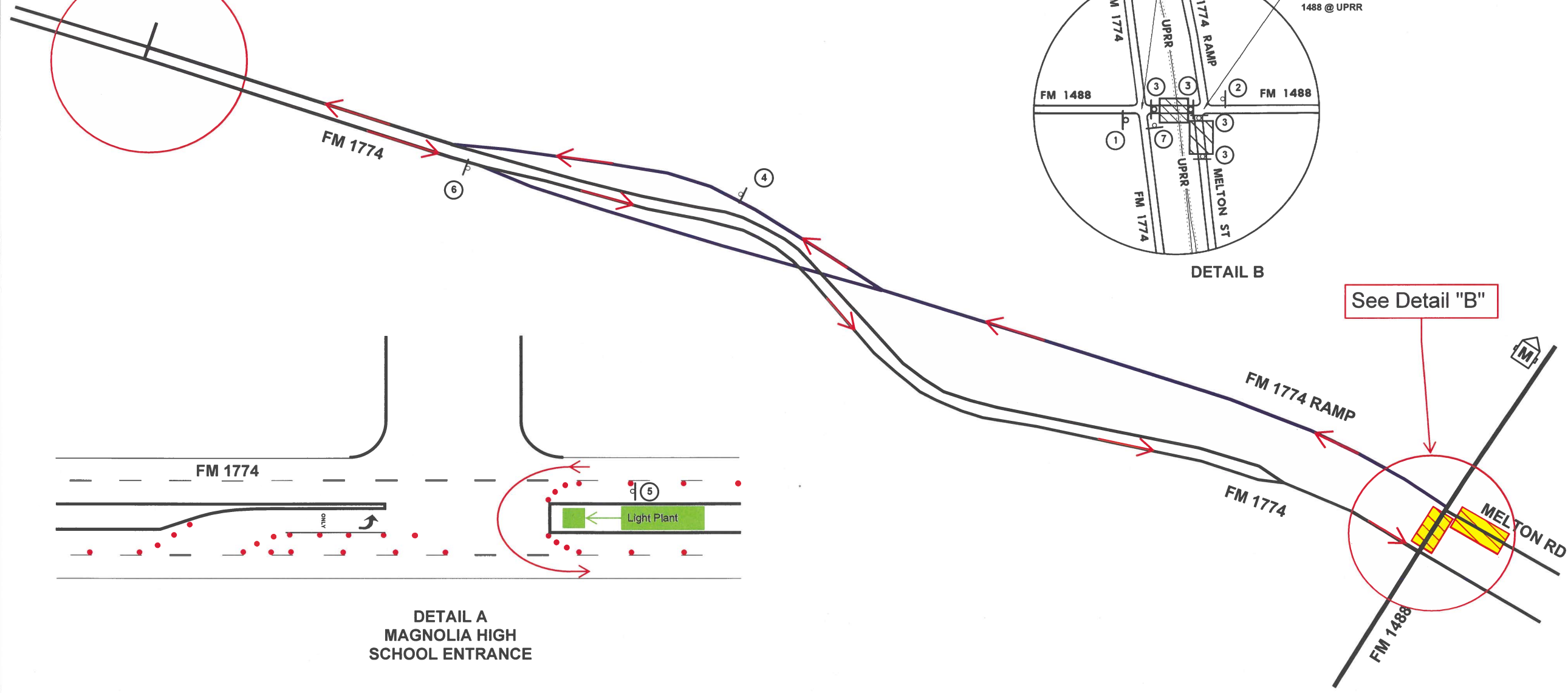
FM 1774 RAMP TO REMAIN OPEN DURING CLOSURE OF FM 1488 @ UPRR

LEGEND

-  PROP PVMT CONSTRUCTED THIS PHASE
-  TYPE III BARRICADE
-  DETOUR ROUTE
-  CONSTRUCTION SIGN
-  MESSAGE BOARD

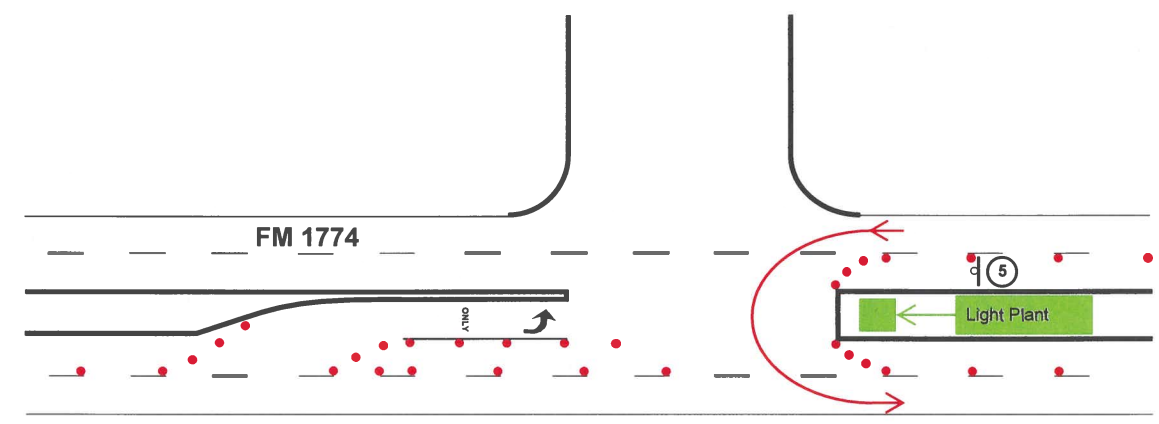
NOTES

1. Lane Closures shown in this TCP Detour Layout shall comply with TxDOT Standards Details.

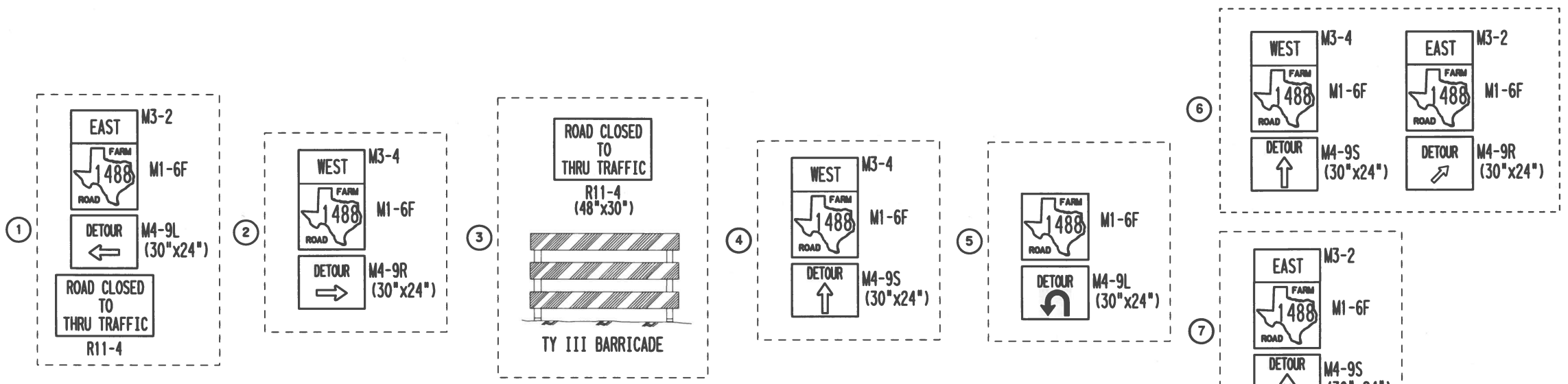


DETAIL B

See Detail "B"



DETAIL A
MAGNOLIA HIGH SCHOOL ENTRANCE



NOT TO SCALE

ABRAHAM M. GUZMAN
112898
PROFESSIONAL ENGINEER

Abraham M. Guzman
4/15/2021

Texas Department of Transportation






FM 1488

TCP DETOUR LAYOUT UPRR - WB DETOUR

SHEET 1 OF 1

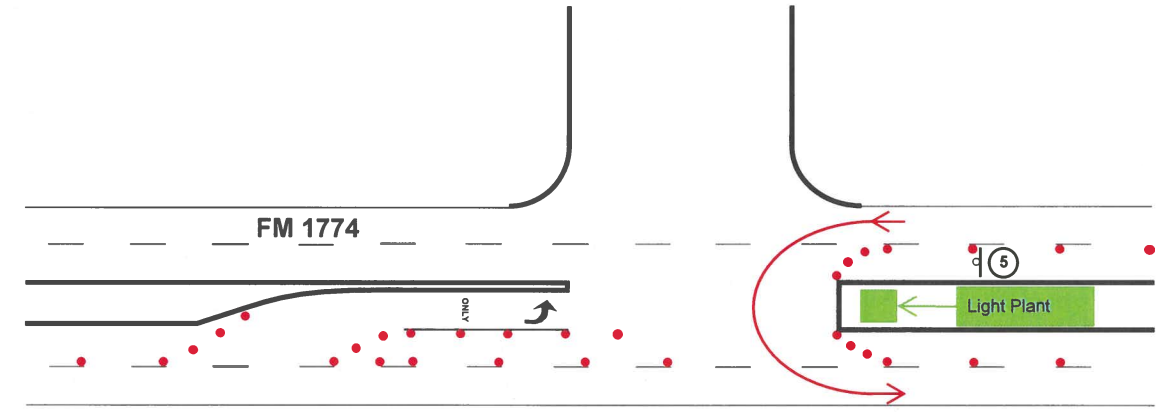
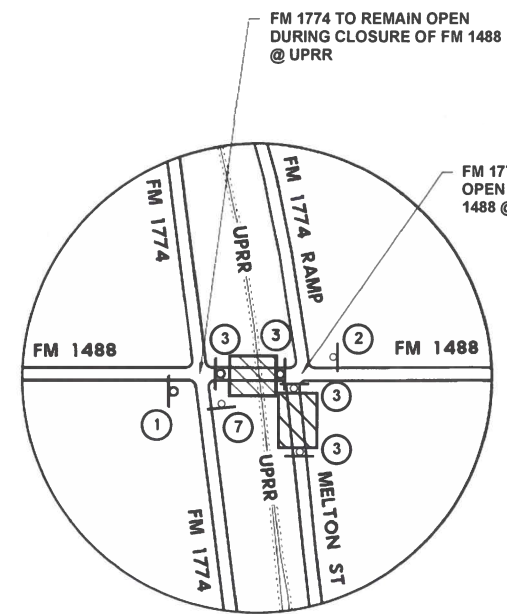
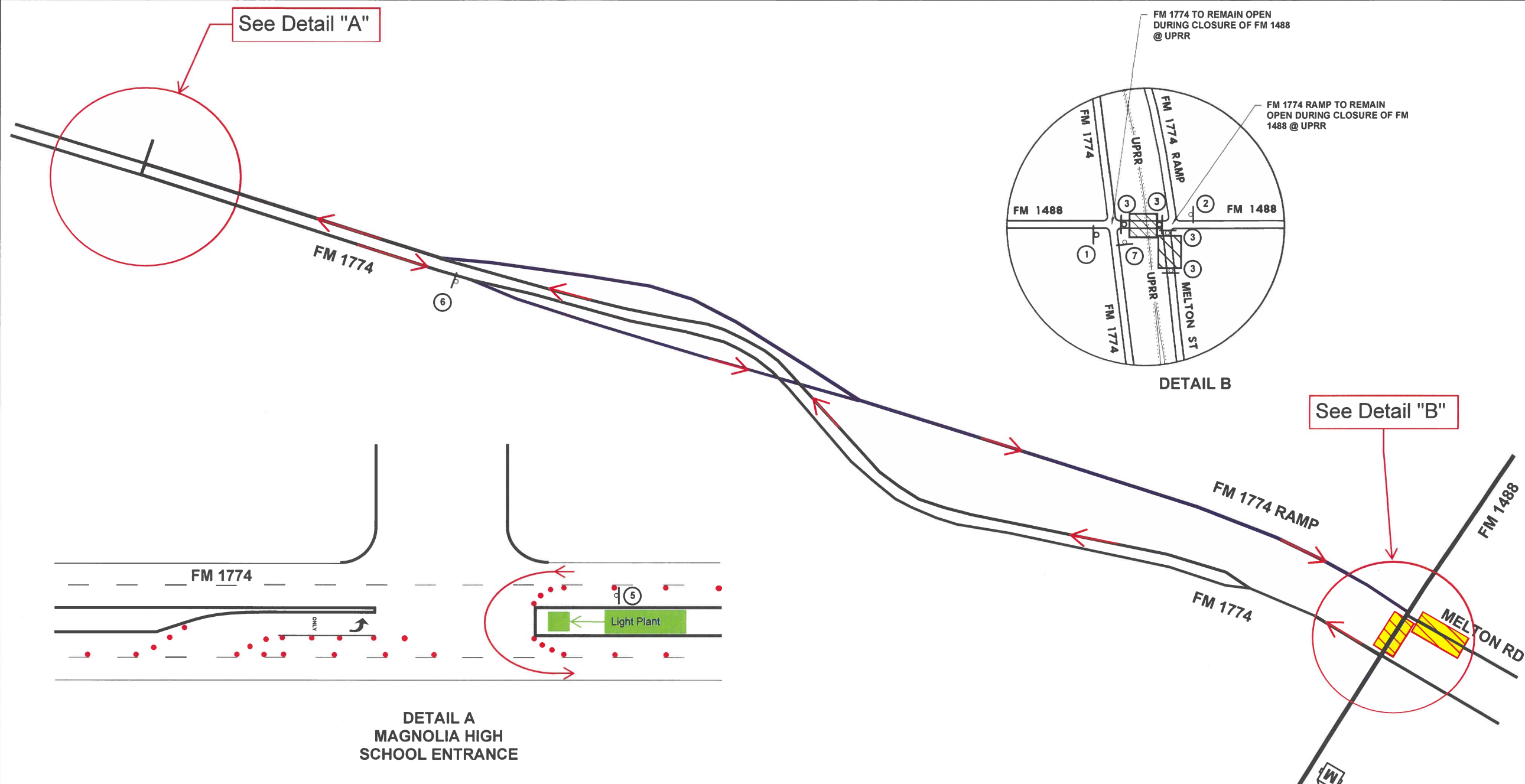
| FED. RD. DIST. NO. | STATE | PROJECT NO. | HIGHWAY NO. | | |
|--------------------|------------|-------------|-------------|---------|-----------|
| 6 | TEXAS | | FM 1488 | | |
| STATE DISTRICT | COUNTY | CONTROL NO. | SECTION NO. | JOB NO. | SHEET NO. |
| HOUSTON | MONTGOMERY | 0523 | 09 | 009 | 198C |

LEGEND

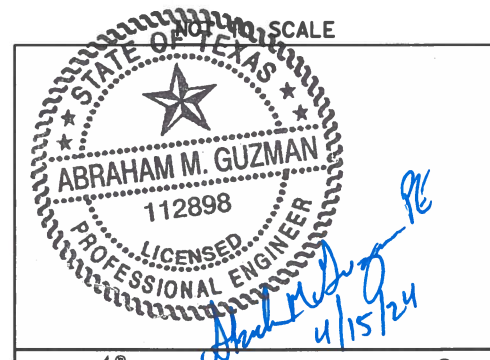
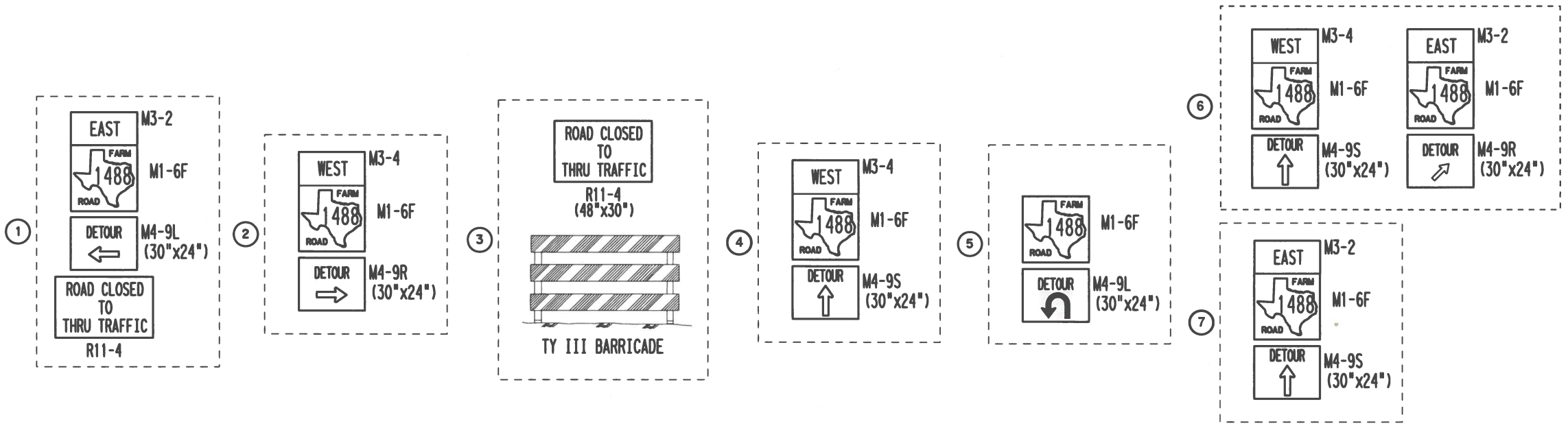
-  PROP PVMT CONSTRUCTED THIS PHASE
-  TYPE III BARRICADE
-  DETOUR ROUTE
-  CONSTRUCTION SIGN
-  MESSAGE BOARD

NOTES

1. Lane Closures shown in this TCP Detour Layout shall comply with TxDOT Standards Details.



**DETAIL A
MAGNOLIA HIGH
SCHOOL ENTRANCE**



**TCP DETOUR LAYOUT
UPRR - EB DETOUR**

SHEET 1 OF 1

| | | | |
|-------------------|------------|-------------|-------------|
| FED. RD. DIV. NO. | STATE | PROJECT NO. | HIGHWAY NO. |
| 6 | TEXAS | | FM 1488 |
| STATE DISTRICT | COUNTY | CONTROL NO. | SECTION NO. |
| HOUSTON | MONTGOMERY | 0523 | 09 |
| | | JOB NO. | SHEET NO. |
| | | 009 | 198D |