



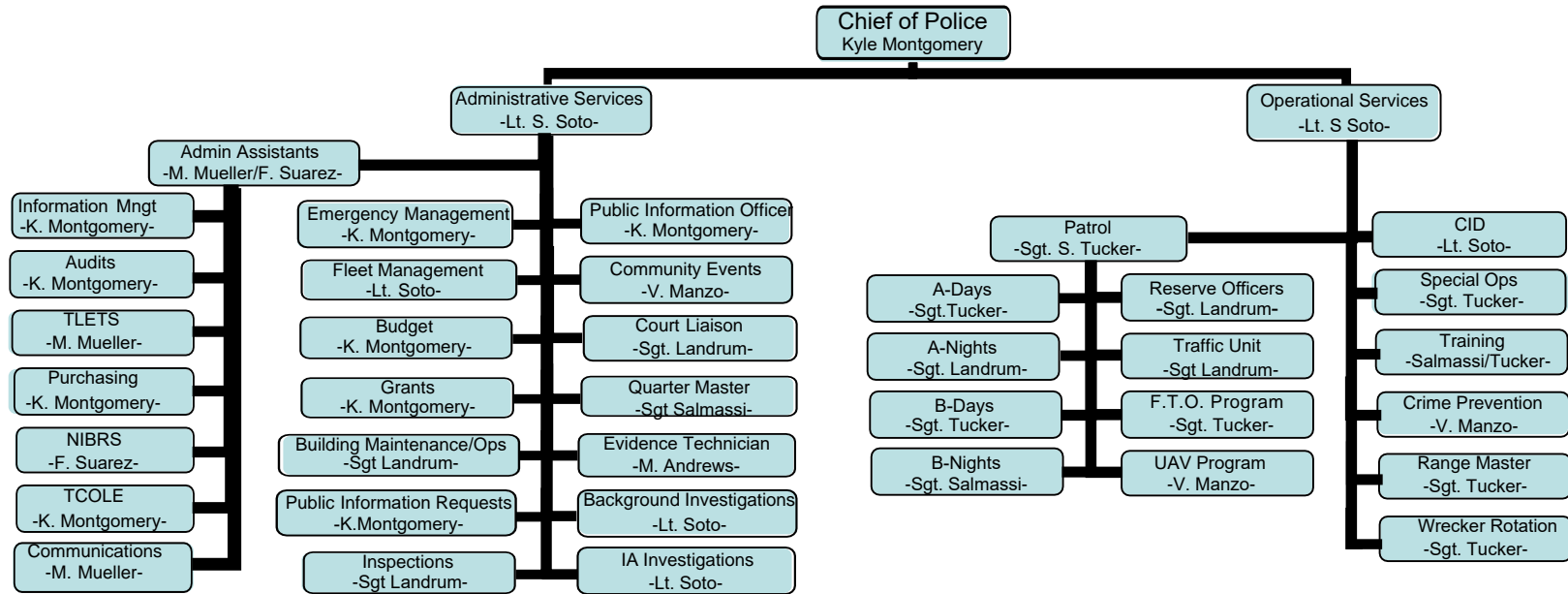
DEPARTMENT REPORT

July 2021

**Prepared by:
Kyle Montgomery
Chief of Police**

ADMINISTRATIVE

Organizational Chart



July 2021

PATROL

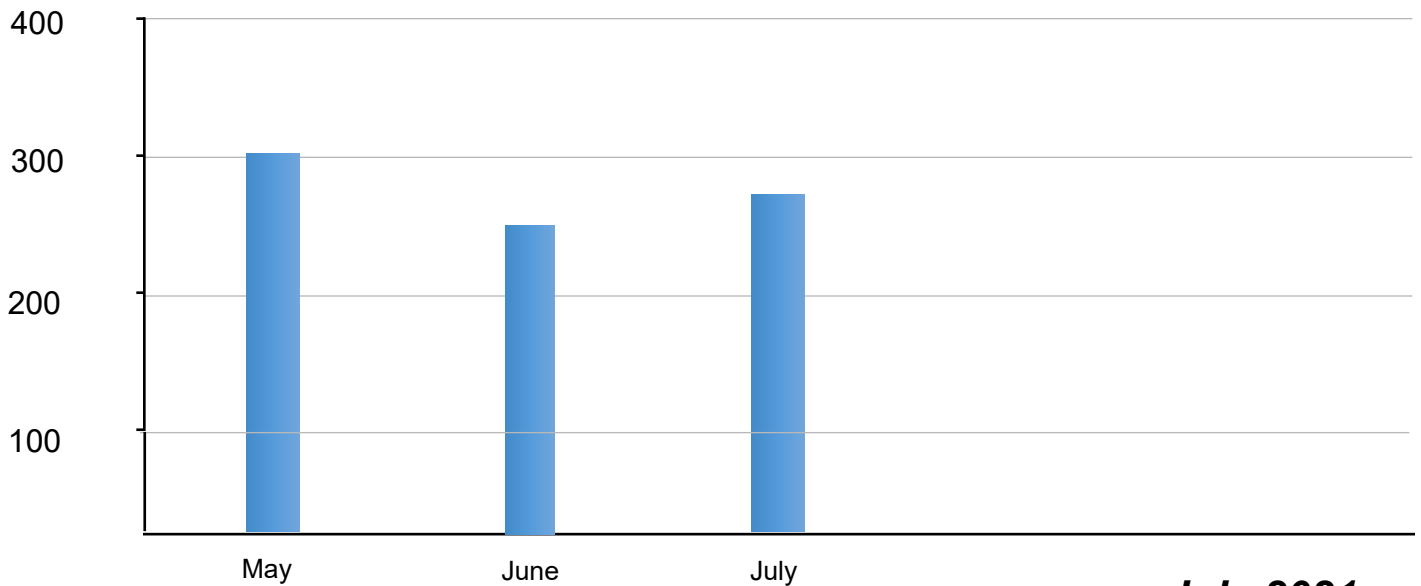
CALL BREAKDOWN

	June	July	MONTHLY CHANGE
EMERGENCY	18	16	-2
NON-EMERGENCY	236	270	+34

CALLS FOR SERVICE

	May	June	July
Total Calls for Service	303	254	286

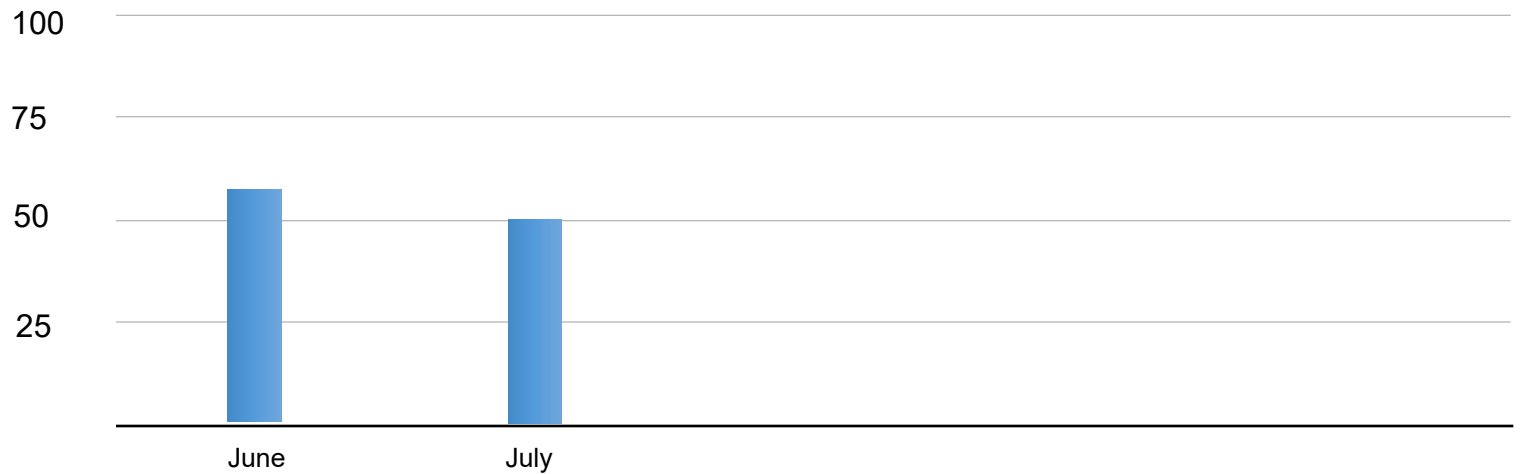
*The total calls for service include all priorities, event entries, and officer initiated calls.



July 2021

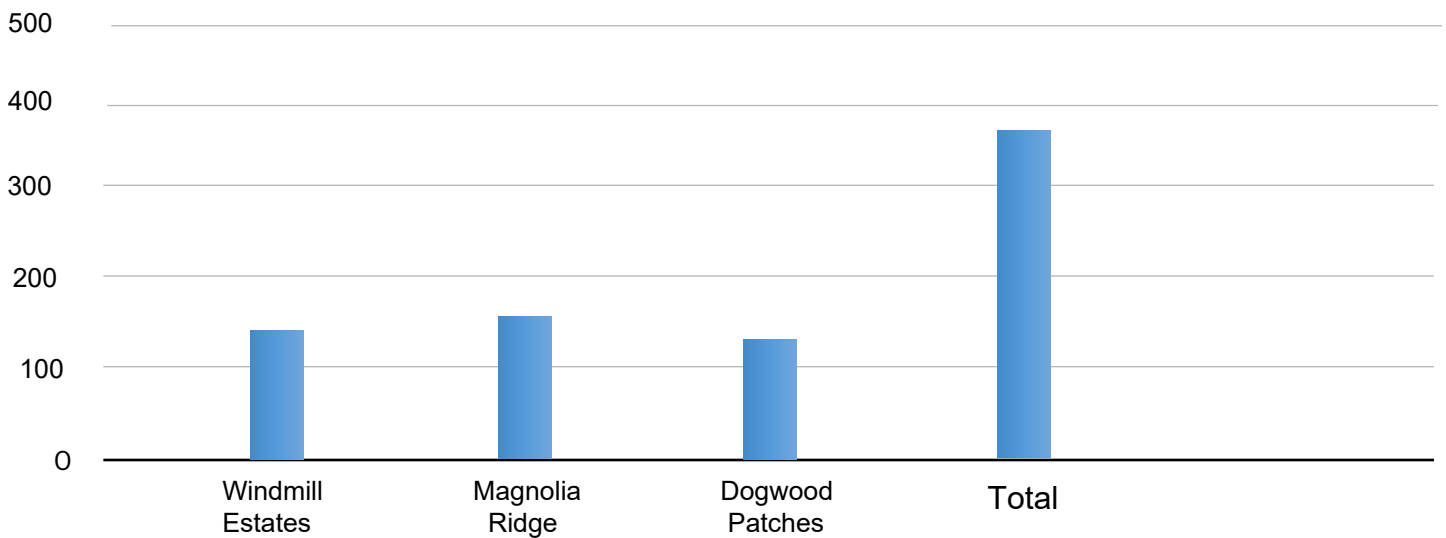
OFFENSE REPORTS

	<i>June</i>	<i>July</i>
Report Totals	57	50



RESIDENTIAL PATROLS

	<i>Windmill Estates</i>	<i>Magnolia Ridge</i>	<i>Dogwood Patches</i>
June	146	166	137
July	126	143	119



July 2021

CALL TOTALS

OFFENSES	June	July	MONTHLY CHANGE
Burglary of a Vehicle	4	0	-4
Burglary of a Building	0	1	+1
Burglary of a Habitation	0	1	+1
Theft	0	0	-
Fraud/Forgery	2	2	-
Criminal Mischief	4	2	-2
Robbery	0	0	-
Assault/Family Violence	1	0	-1
Death Investigation	0	0	-
Sexual Assault	0	0	-
Motor Vehicle Crash	9	11	+2
Alarms	23	23	-
Medical calls	4	9	+5
Welfare Checks	12	7	-5
Disturbances	2	2	-
Assist Outside Agency	6	12	+6
Narcotics	14	8	-6
DWI	11	5	-6
Suspicious Person/Vehicle	7	8	+1

July 2021

CRIMINAL ARRESTS

	June	July	MONTHLY CHANGE
TOTAL ARRESTS	29	16	-13
NARCOTICS	15	8	-7
DWI	11	5	-6

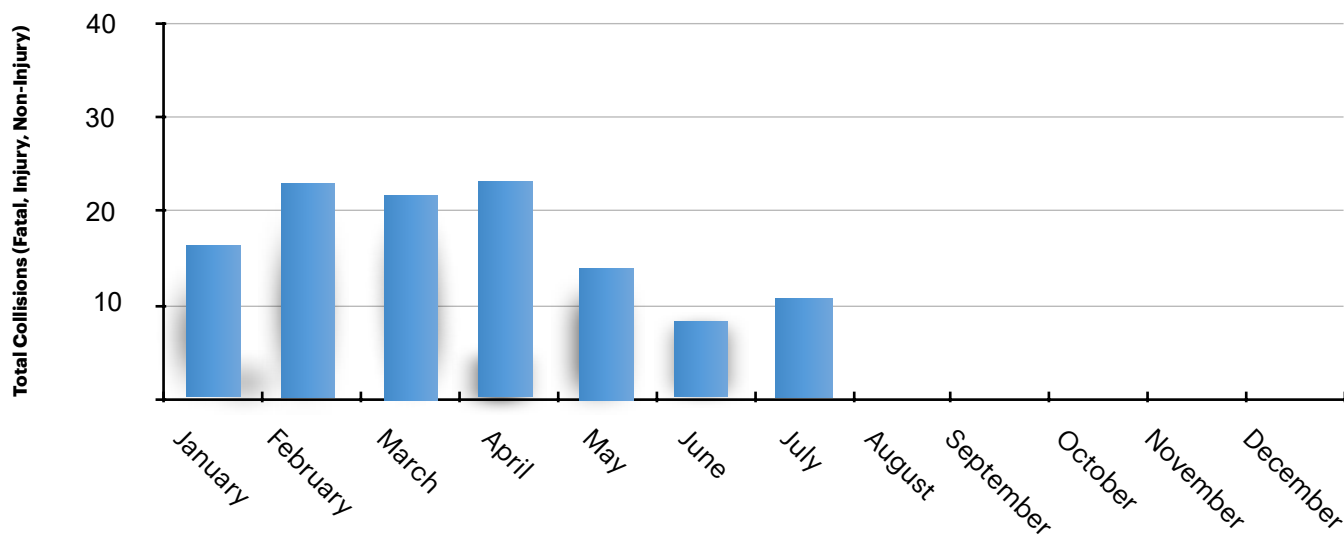
TRAFFIC CONTACTS BY RACE

	Asian Pacific	Black	Hispanic	Alaskan Indian	White
June	5	38	104	4	325
July	8	25	99	0	259
Change	+3	-13	-5	-4	-66

TRAFFIC CRASHES

	June	July	MONTHLY CHANGE
Fatal	0	1	+1
Injury	0	1	+1
Non-Injury	9	10	+1

TRAFFIC CRASH TREND 2021



July 2021

TRAFFIC ENFORCEMENT

	June	July	MONTHLY CHANGE
FM 1488	337	251	-86
FM 1774	113	91	-22
Magnolia Blvd	122	96	-26
Buddy Riley	62	54	-8
Nichols Sawmill	8	18	+10
Total Violations	610	485	-125

COMMERCIAL PATROLS

	June	July
Business Checks	619	553
Business Contacts	495	40
Totals	668	593

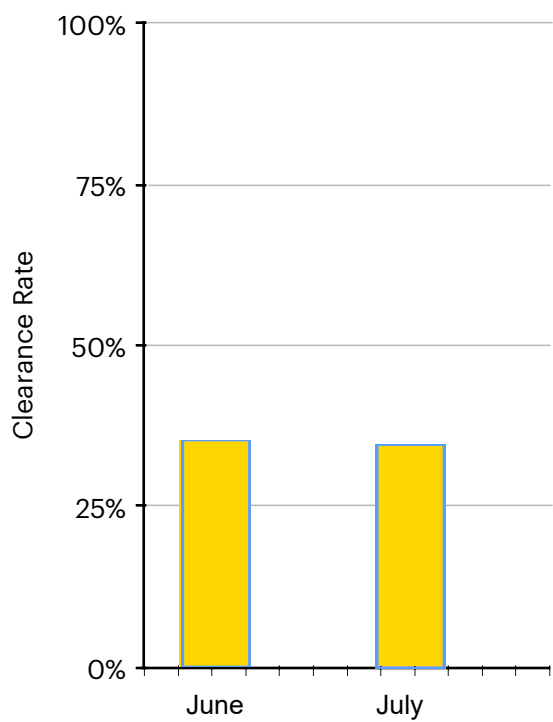
CRIMINAL INVESTIGATIONS

	June	July	MONTHLY CHANGE
Assault	1	1	-
Sexual Assault	0	0	-
Robbery	0	0	-
Death	0	0	-
Persons Crime Totals	1	1	-
Burglary-Building	0	1	+1
Burglary-Vehicle	5	0	-5
Burglary- Habitation	0	1	+1
Theft	0	0	-
Property Crime Totals	5	2	-3
TOTALS	6	3	

	June	July	MONTHLY CHANGE
Hit and Run Crashes	0	0	-
Financial Crime	0	0	-
Criminal Mischief	0	1	+1
Arrests/Warrants	4	3	

July 2021

CASE CLEARANCE RATES



	June	July	MONTHLY CHANGE
Total Offenses	6	10	+4
Cleared	2	3	-1
Monthly Clearance Rate	33%	30%	-3%

Call Type Report

MAGNOLIA POLICE DEPARTMENT

From: 07/01/2021

To: 07/31/2021

Call Type Description	Number of Calls
Administration	9
Alarm	23
Animal Control	2
Arrest-Class A	2
Arrest-Class B	5
Arrest-Felony	5
Assist Magnolia PD	30
Assist Outside Agency	12
ATL/BOLO	4
Building Check	6
Burglary-Building	1
Burglary-Habitation	1
Business Check	553
Business Contact	40
Child Discipline	1
Civil	3
Commercial Patrol	3
Criminal Mischief	2
Disturbance in Progress	1
Disturbance Past	1
DOA	1
Fraud	2
Harassment	2
Information	9
Investigation	1
Medical Call	9
MISCELLANEOUS	2

Call Type Report

MAGNOLIA POLICE DEPARTMENT

From: 07/01/2021

To: 07/31/2021

Call Type Description	Number of Calls
Motorist Assist	1
MVA-Major	1
MVA-Minor	10
Noise Disturbance	1
OTHER	2
Residential Patrol-Dogwood Patches	119
Residential Patrol-Magnolia Ridge	143
Residential Patrol-Windmill Estates	126
Routine Patrol	97
SELECT	4
Suspicious Person	7
Suspicious Vehicle	4
Towed Vehicle	4
Traffic Hazard	4
Unity Park Patrol	24
Vacation Watch	5
Vehicle Disturbance	1
WARRANT SERVICE	1
Welfare Check	7

Arrest Report Count
MAGNOLIA POLICE DEPARTMENT
From: 01/01/2021 To: 07/31/2021

[illegible]

<u>Offense</u>	<u>Jan.</u>	<u>Feb.</u>	<u>Mar.</u>	<u>Apr.</u>	<u>May</u>	<u>Jun.</u>	<u>Jul.</u>	<u>Aug.</u>	<u>Sep.</u>	<u>Oct.</u>	<u>Nov.</u>	<u>Dec.</u>	<u>Total</u>
POSS CS PG 1 <1G	2	2	3	1	4	3	3	0	0	0	0	0	18
POSS CS PG 1 >= 1G<4G ANALOGUE	0	0	0	0	1	0	0	0	0	0	0	0	1
POSS CS PG 1 >=1G<4G	1	0	0	2	1	0	2	0	0	0	0	0	6
POSS CS PG 1>=4G<200G	2	1	0	0	0	0	0	0	0	0	0	0	3
POSS CS PG 1A <20 AU	0	0	0	0	1	0	0	0	0	0	0	0	1
POSS CS PG 2 <1G ANALOGUE	1	0	0	0	1	1	0	0	0	0	0	0	3
POSS CS PG 2 >= 1G<4G	2	2	1	1	1	1	0	0	0	0	0	0	8
POSS CS PG 2 >=4G<400G	0	0	0	0	1	1	1	0	0	0	0	0	3
POSS CS PG 2< 1G	0	1	0	1	1	1	0	0	0	0	0	0	4
POSS CS PG 2>=4G<400G ANALOGUE	0	0	0	0	1	0	0	0	0	0	0	0	1
POSS CS PG 3 <28G	1	0	0	1	0	0	0	0	0	0	0	0	2
POSS CS PG 3>=28G<200G	0	0	0	0	1	0	0	0	0	0	0	0	1
POSS MARIJ <2OZ	3	2	2	3	1	6	2	0	0	0	0	0	19
POSS MARIJ >2OZ<=4OZ	1	1	0	0	0	0	0	0	0	0	0	0	2
POSS MARIJ >4OZ<=5LBS	3	0	0	0	0	0	0	0	0	0	0	0	3
POSS MARIJ >50LBS<=2,000	1	0	0	0	0	0	0	0	0	0	0	0	1
POSSESSION OF NARCOTIC PARAPHERNALIA	0	1	0	0	0	1	0	0	0	0	0	0	2
PUBLIC INTOXICATION	1	0	0	0	1	1	0	0	0	0	0	0	3
TAMPER W/GOVERNMENT RECORD	0	0	0	0	1	0	0	0	0	0	0	0	1
THEFT OF FIREARM	0	0	0	0	0	1	0	0	0	0	0	0	1
THEFT PROP <\$2,500 2/MORE PREV CONV	0	1	0	0	0	0	0	0	0	0	0	0	1
UNAUTHORIZED USE OF A VEHICLE	0	1	0	0	0	0	0	0	0	0	0	0	1
UNL CARRY HANDGUN LIC HOLDER	0	1	0	0	0	0	0	0	0	0	0	0	1
UNL CARRYING WEAPON	3	2	3	0	1	1	1	0	0	0	0	0	11
UNL POSS FIREARM BY FELON	0	0	0	0	2	0	0	0	0	0	0	0	2
Total	44	30	27	27	34	29	16	0	0	0	0	0	207